



Wheatlands, Chells Manor, Stevenage, SG2 0JT

Offers Over £195,000

Wheatlands, Chells Manor, Stevenage, SG2 0JT



- One Bedroom Semi Detached Home With Allocated Parking
- Open Plan Kitchen and Lounge Area
- Bathroom
- Viewing Highly Suggested OFFERED CHAIN FREE
- Peacefully Located in the early phase of Chells Manor close to Chells Woodland
- Combination Boiler
- Ideal Investment or First Time Purchase
- In Need Of Full Modernisation
- Double Bedroom
- Close walking distance to Chells Woodland

Entrance Hallway

8'5 x 5'10 (2.57m x 1.78m)

excellent bus route which runs on the White Way going to various locations.

Bathroom

5'10 x 5'9 (1.78m x 1.75m)

Bedroom

8'8 x 11'10 (2.64m x 3.61m)

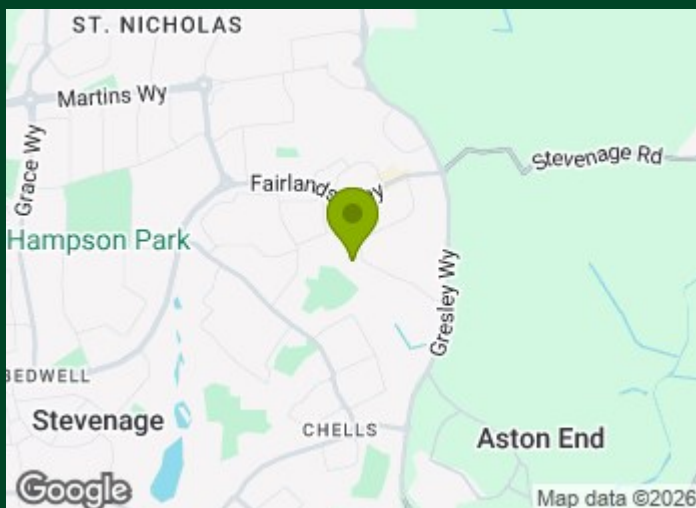
Kitchen/Lounge Area

17'4 x 11'10 (5.28m x 3.61m)

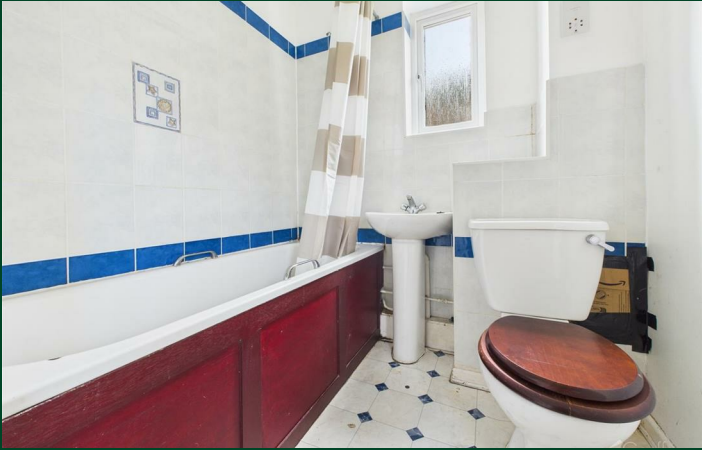
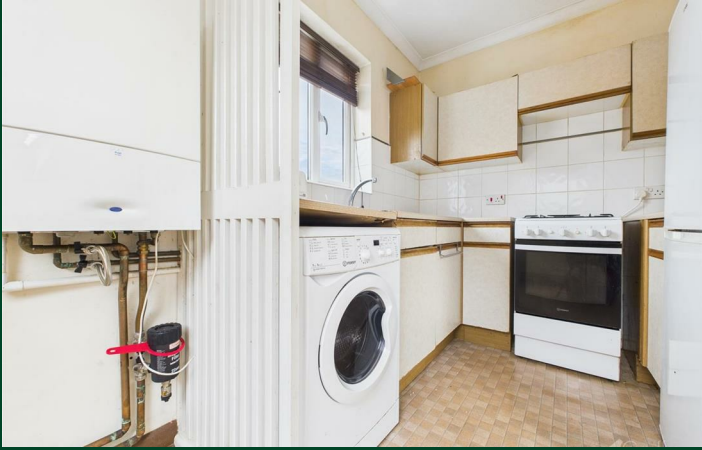
Allocated Parking Space

Local Information

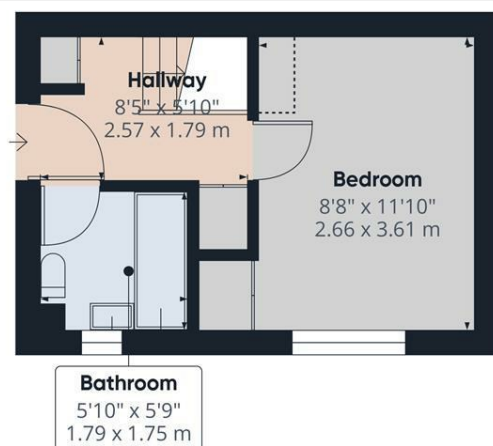
Wheatlands is situated in Chells Manor which is a well established private development build in the late 1980's to the early 1990's. There is an



Directions



Floor Plan



Floor 0



Floor 1



Geoffrey
Matthew

Approximate total area⁽¹⁾376 ft²35.1 m²

Reduced headroom

30 ft²1.9 m²

(1) Excluding balconies and terraces

Reduced headroom

Below 5 ft/1.5 m

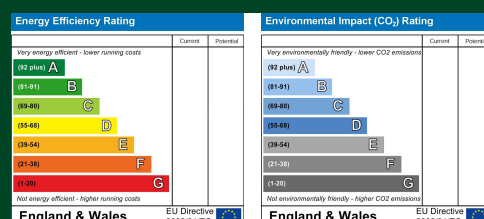
Calculations reference the RICS IPMS 3C standard. Measurements are approximate and not to scale. This floor plan is intended for illustration only.

GIRAFFE360

Council Tax Details

Band

These particulars, whilst believed to be accurate are set out as a general outline only for guidance and do not constitute any part of an offer or contract. Intending purchasers should not rely on them as statements of representation of fact, but must satisfy themselves by inspection or otherwise as to their accuracy. No person in this firm's employment has the authority to make or give any representation or warranty in respect of the property.



Old Harlow: 01279 444988 Email: harlow@geoffreymatthew.co.uk
Great Ashby: 01438 740111 Email: greatashby@geoffreymatthew.co.uk